



www.hopectr.org

We help.
We heal.
We give hope.

Annual Report
July 1, 2005 - June 30, 2006

*H*ope's Mission Statement

Hope Center is a private, nonprofit organization that coordinates and provides life sustaining/life rebuilding services to Lexington's homeless and at-risk persons.

From our Executive Director...

As the Executive Director of the Hope Center, by necessity I spend most of my time focused on the big picture. Indeed, most of what follows in this letter will be about that big picture, issues that affect the organization and its mission as a whole.

Nonetheless, I find it gratifying to stop from time to time and pay attention to the smaller pictures, the snapshots of individual lives affected by the work we do. Some of them are told in the stories in this annual report. One is of a woman with a husband and four children who inexplicably started snorting cocaine at 45 and became a drug addict. Another is of a man who started taking drugs as a teenager when his parents' ugly divorce left him virtually unsupervised. Still another tells of a man whose mental illness left him homeless and abandoned.

In each case, there was a question whether that person's life would keep going down the path of misery and destruction. In each case, a Hope Center program provided the answer: No, it would not. That life would be saved.

I don't mind focusing on the big picture. That's my job. But the most satisfying thing about the big picture is that it makes the little pictures possible.

In any organization, philanthropic or otherwise, you have to have the means to do the job. That means the big picture starts with money. Last fiscal year we again set a record for private donations at \$860,330. Don and Mira Ball have continued to be staunch partners in our mission with important gifts from Ball Homes, the Ball Family Charity foundation and the Minnifield-Cutter-Ball partnership. Particularly large gifts came from individuals like Doug Ezzell and another friend of the homeless who wishes to remain anonymous. Others who made a big difference last year include Dr. George Privett, Christian Word Ministries, Bluegrass Community Foundation, Foundation for Drug Free Youth, Community Foundation and Kentucky Peer Assistance Program for Nurses.

We also once again enjoyed the enormous kindness of Bonnie Quantrell Jones, Bill Bridges and Quantrell Auto Group, who donated another luxury vehicle for us to raffle off. Rood & Riddle Equine Hospital continued their valuable support of our work with proceeds from the Rood & Riddle Grand Prix.

This past fiscal year, for the first time, we had the benefit of full, budgeted funding of the recovery program for male inmates at the Detention Center. This followed several years of inconsistent government funding and the use of our own funds at times to keep the program afloat. We are grateful to the Mayor and the Urban County Council for this support.

Additionally, in their budget for the ensuing fiscal year, passed in June, the Mayor and Council included funding for a program for female inmates as well. That program is getting off to a good start.

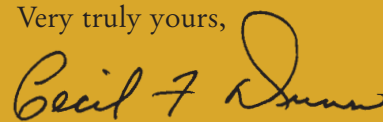
The Recovery Program for Women was helped by a \$160,000 annual grant from federal Substance Abuse and Mental Health Services Administration. When the SAMHSA folks came by for their inspection, they were so pleased with what they saw that they awarded us a one-time \$200,000 grant for the following fiscal year.

The biggest need we have faced for some time now is a new facility to house our Recovery Program for Men. That program will benefit from a purpose-built facility much like the one the Recovery Program for Women enjoys. It will also relieve some of the pressure on our shelter facility, where the men's recovery program now is housed. The shelter regularly sleeps 190 to 210 men in a building with only 116 beds.

I mentioned this need in our last annual report. What I can say for now is that we are closer to making this a reality than we were last year, but we're not there yet. We do know the location. It will be next to our current site on West Loudon Avenue on land given to us by Lexmark.

These are just some of the ways we paint the big picture around here, but we can only do that because of the many generous partners who go the journey with us by supporting our work with their contributions. You are part of that big picture. You make all those smaller pictures possible. The men and women of the Hope Center – clients, employees, board members and volunteers – thank you for your faithfulness.

Very truly yours,



Cecil F. Dunn



Contents

A message from our Executive Director	1
Rob's Story	3
Belinda's Story	4
Gilbert's Story	5
Financial Statements for July 1, 2005 - June 30, 2006	6
Recovery Programs that Make a Difference	8
Gerard's Story	9
With Gratitude to Our Donors	10
In-kind Sustaining Partners	21



Did you know... In 2005, volunteers provided the Hope Center with services valued at \$91,327.50.

Rob's Story

“I didn't know that I could trust them at first; they earned it.”

What brought me to the Hope Center was a place to live. I wasn't sure what the Hope Center could even offer me other than shelter. I had been diagnosed with ADHD and depression. I had suicidal tendencies too. Dealing with all of this meant abusing alcohol and drugs; it was all I knew to do.

It was May in 2004 that I found myself here. My buddy who was my roommate had moved out which meant I was homeless. My situation wasn't always so bad, though. I was married for five years and have children.

Being around the guys at the Hope Center, I heard that there were programs here that helped people like me. I was able to talk with an intake coordinator, and they placed me in the mental health program.



I had a team of staff working with me to meet my needs. I mainly received help from the mental health program. Since then, I have been on medication to help with my psychological problems.

For a while, I lived in intermediate housing, some small dorms at the Hope Center used to help men in the mental health program. It was nice, but I wanted a place of my own. I looked in the newspaper and Ellen, with Housing Support, drove me to different apartments to find the right one for me. I am now living in my own apartment.

I have been with the Hope Center for over two years now, and they have helped me in a lot of ways. It was because of the Hope Center that I was able to get Social Security income. They help me grocery shop and take me to the doctor when I need to go.

The staff here, Doug, Gary, Shaun, Ellen, they are my friends and I trust them. I didn't know that I could trust them at first; they earned it. They are always willing to help no matter what. When I knock at their door they are never too busy for me. Of course, they won't do everything for me, but that's not what it's about. It's about learning to live.

Did you know... The largest portion of the Hope Center's funding comes from private contributions and accounts for 27% of our annual budget.

Belinda's Story

“...it breaks my heart that other people are living the way I lived for too long...”

I came to the Hope Center in June 2005, and I recently completed the program. The reason I came here, like many women, was because I was court ordered, but my past is a little different. I was married to the same man for 35 years and we are still happily married with four children. I never did drugs as a teenager. I never even smoked weed. Drugs were not in my vocabulary.

I don't know how it happened, it was just something that happened. When I was 45 years old I snorted coke for the first time. I was having a Tupperware party when a friend that I had gone to school with invited me to her house. She and her boyfriend were doing coke and they had asked me if I wanted to try it. I don't know why I did, I guess I figured it wouldn't hurt any. So I did it, and it felt good. I did it again. Before I knew it, I had four years under my belt as a drug addict.

I carried on as normal at first. Because I had never lived this lifestyle, my husband and children never suspected I was on drugs. On the third year I finally confessed my addiction to my husband. He knew something wasn't right. I had gotten to the point that I couldn't function like normal. I was missing work and I wasn't at home much anymore. I lied a lot to him at first.

I wanted help, and fortunately my husband was supportive of that. He and I knew that a short-term recovery center wouldn't help so we went to the Hope Center to get some brochures and get me on the list. Although I wanted help I never followed up with a phone call. I kept saying I would call, but I never did and kept on using.

Even though I was tired of the life I was living, the dishonesty, and the way I was feeling, I didn't get the help I needed in time. So after four years of using it caught up to me. I was using coke one day when the neighbors called the police because of noise level or the number of cars in the drive, who knows. When the police came, I got busted. I was extremely scared.

I ended up in jail sentenced for six months, and as I was in there, I always thought that I wouldn't be there long. I served my entire sentence including my six months of rehabilitation with the Hope Center. It took me a little longer, a year.

I didn't realize that drugs were that bad or what they could do to you. I had

never expected to live this lifestyle, and now that I've been there I don't want to go back. Drugs take everything away. When I left the program I was thankful that I could go home to a family that is happy to have



their wife and mother back fully recovered, but it breaks my heart that other people are living the way I lived for too long, particularly the young. I intend to give back what I can, especially in S.O.S., where women first come in the door. It's tough in there. The Hope Center is a great place, and people's lives change here. To me, this place saved my life.

Did you know... The Hope Center Recovery Program has been used as a model for Recovery Kentucky, a series of 10 recovery programs being instituted throughout the Commonwealth of Kentucky.

Gilbert's Story

“These men opened my eyes and gave me hope for my future...”

I was 43 years old, I had been drinking since I was 17 years old - I was a drunk. I came to the Hope Center twice, but it wasn't until the second time around that I really started to listen to what they said. In September of 2003, only months after I had relapsed and left, I came back and completed the recovery program.

When I graduated from Phase I, I decided to stay on as assistant staff and lived in transitional housing. It was good, and structured, but it got crowded quickly so the Hope Center offered me another option.

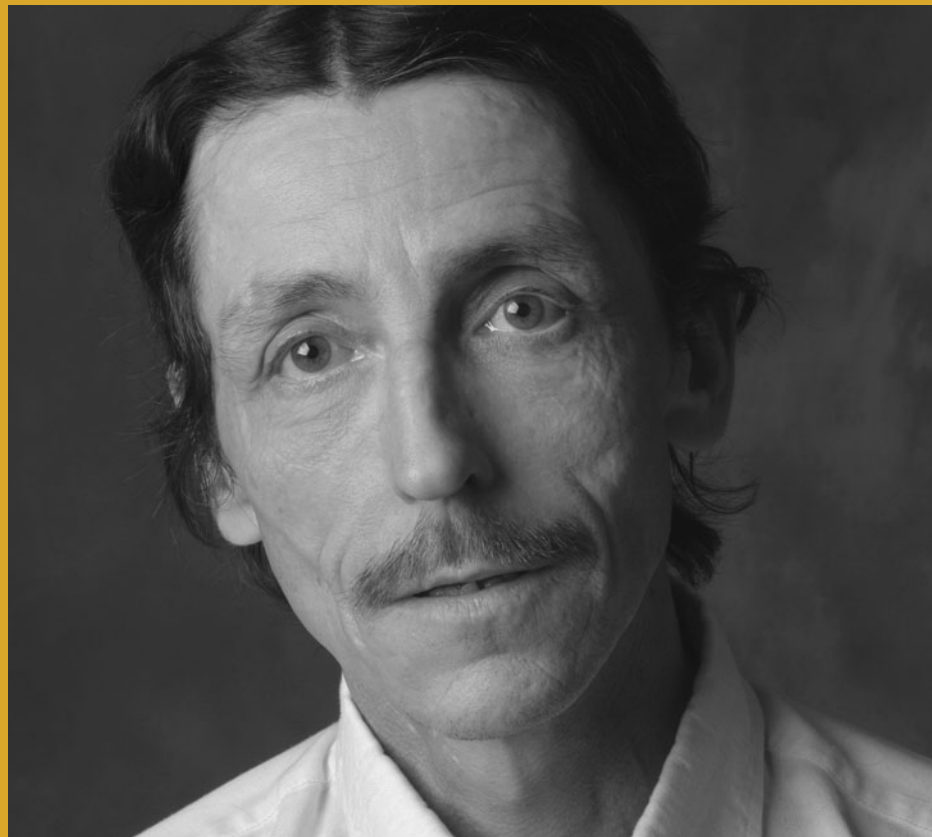
I had been working and paying rent while staying in transitional housing, but I knew I couldn't stay under the shelter of the Hope Center forever. I was already doing well and saving money, so when I was offered an opportunity to go to Hill Rise Place Apartments, the efficiency apartments that are operated under the Hope Center, I took it.

It was time for me to step out on faith and leave the structured environment of the Hope Center. I love the Hope Center, but the freedom of having my own place is a blessing. The best part about Hill Rise is the people. It's a drug and alcohol free environment. My neighbors there are a lot different than the crowd I used to run

with. It helps with my recovery to have a place to go every night where they don't drink or use.

I work at the Jif peanut butter factory in Lexington now. I have been saving money and have recently been able to buy a truck. Right now, I plan to keep saving and soon leave Hill Rise to get another apartment.

This past September I celebrated three years of being sober. I had never finished anything in my life before, but with



the help of David and Xavier at the Hope Center I finally made up my mind that I was going to get through this program, and I did.

I still have offers to go drinking with the guys. I just tell them to go their way and I'll go mine, back to Hill Rise.

Did you know... In 2005, nearly 1500 individuals volunteered at the Hope Center.

Financial Statements

	Fiscal year ending	
	<u>June 30, 2005</u>	<u>June 30, 2006</u>
Assets		
Cash and cash equivalents	\$259,330	\$109,310
Grants receivable	\$144,674	\$172,204
Prepaid expenses	\$11,664	\$8,545
Inventory	\$249	\$172
Property and equipment	\$1,074,076	\$1,280,077
Hope Center Foundation, Inc.	\$695,107	\$786,644
Total Assets	\$2,185,100	\$1,363,608
Liabilities		
Accounts payable	\$45,062	\$76,339
Deferred grant revenue	\$0	\$0
Deferred revenue	\$43,535	\$0
Accrued expenses	\$82,557	\$81,836
Notes payable	\$145,000	\$208,998
Compensated absences	\$55,797	\$63,969
Capital Lease	\$9,162	\$7,621
Total Liabilities	\$381,113	\$263,735
Net Assets		
Unrestricted	\$1,803,987	\$1,921,976
Temporarily restricted	\$0	\$0
Total Liabilities and Net Assets	\$2,185,100	\$2,185,711
Public Support and Revenues		
Contributions-Monetary	\$577,404	\$690,417
Contributions-Special Events	\$213,636	\$198,065
Contributions-Land	\$1,000,700	\$0
Grants	\$1,736,348	\$1,948,264
Program service fees	\$46,890	\$44,868
Food stamp income	\$36,630	\$34,619
Court order income	\$52,400	\$76,800
Net realized/unrealized gains (loss) on investments	\$21,898	\$74,035
Interest income	\$17,420	\$17,522
Total Public Support and Revenues	\$3,703,326	\$3,084,590

* 2005 amounts are audited and 2006 amounts are prior to the audit.

** Imputed Income and Expense for use of government-owned property in the amount of \$132,961 for 2005 and \$133,000 in 2006 is not included above.

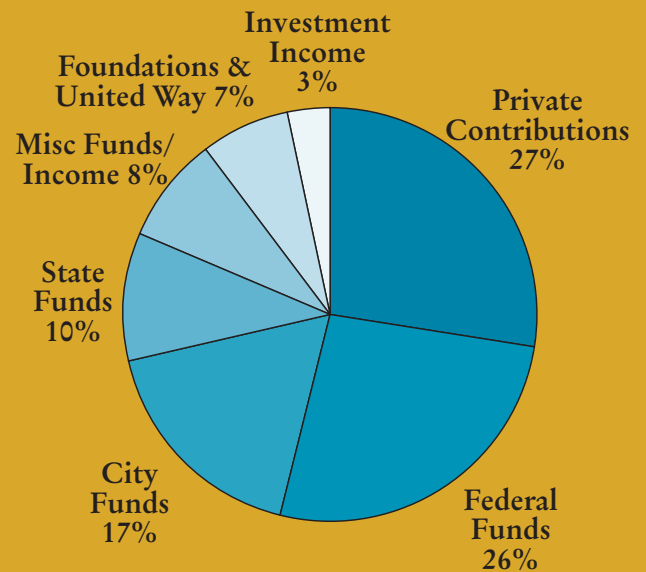
Financial Statements

	Fiscal year ending	
	<u>June 30, 2005</u>	<u>June 30, 2006</u>
Expenses		
Program Services:		
Shelter/Recovery	\$2,290,403	\$2,453,140
Supporting Services:		
General and Administrative	\$284,850	\$251,465
Fundraising	\$260,544	\$261,996
Total Expenses	\$2,835,797	\$2,966,601
Change in net assets	\$867,529	\$117,989
Net Assets at Beginning of Year	\$936,458	\$1,803,987
Net Assets at End of Year	\$1,803,987	\$1,921,976

Revenue Sources

Fiscal Year 2005-2006

	<u>Amount</u>	<u>Percentage</u>
Federal Funds	799,966	25.93%
State Funds	312,356	10.13%
Misc. Funds/Income	262,681	8.52%
City Funds	524,700	17.01%
Foundations/United Way	233,000	7.55%
Investment Income	91,557	2.97%
Private Contributions	860,330	27.89%
Total	3,084,590	



Did you know... Approximately 11% of Hope Center clients at the men's facility in 2005 were veterans.

Recovery Programs that Make a Difference

“The 19% re-arrest rate of graduates compares quite favorably with the 41.7% rate for non-program inmates.”

September 2006 marked four years that the Hope Center has conducted the Detention Center Recovery Program here in Fayette County. A staff of five teaches inmates a spiritual recovery plan that combines the 12 Steps of recovery from Alcoholics Anonymous with Cognitive Behavior Intervention (CBI), a recovery model that emphasizes change in one's thinking process. The two disciplines are perfectly compatible. After all, we deal with a “captive audience” whose very presence behind bars symbolizes the need for drastic change. The CBI portion appears essential in dealing with criminal minds that for so long have been enslaved and warped by decades of unguided, misguided and wrong-headed examples going back to early childhood in many cases.

Results from the first four years are nothing short of astonishing. Statistics illustrate that 52.8% of inmates admitted to Hope Jail Recovery successfully completed the 120-day program and these figures are improving year by year. During 2005, 76.4% completed. Importantly, the most recent one-year survey reveals that graduates of the Program committed subsequent crimes and returned to incarceration at a rate 50% lower than inmates who did not go through the Program. The 19% re-arrest rate of graduates compares quite favorably with the 41.7% rate for non-program inmates. This corresponds with the Kentucky Treatment Outcome Study finding that the Commonwealth saves \$4.16 for every dollar spent on treatment. In Lexington, these taxpayer savings appear to be even higher.

These numbers have allowed the local government to see clearly that substance abuse treatment saves taxpayer dollars and results in significant reduction of substance use and the commission of crimes. It is estimated that more than 80% of inmates of both genders committed the crimes for which they were incarcerated due to their use of or addiction to alcohol and drugs.

The LFUCG quite recently spoke volumes about its confidence in this recovery model by doubling the ante to add a long-overdue program for

women under the same umbrella the men have enjoyed for four years. A staff of four women conduct an identical 120-day program for female inmates. The women came on board August 7, 2006. As is the case with the those working with male inmates, all the staff members for the women's program are in recovery from substance abuse.

Charles Smith was the first to head up the program at the jail, and he did a masterful job of laying the foundation and building the program. After a long battle with cancer, Charles died in May 2006. Graddy Johnson took over as coordinator and remains at the helm of both the male and female portions of the program. Gordon Chandler, who has been on duty from the inception, is supervisor for the men and Leigh Leonard for the women. Ashley Barnes, Katherine Dennis, Veronica Bryan, Danny Howard, Mike Murphy and Troy Townsend round out the 9 who enthusiastically report to the jail before 7:30 AM each day. All are graduates of Hope Center recovery programs and bring with them the vital, peer-group identification proven so successful in reaching others similarly afflicted.

Inmates are self-referred and court-ordered to the jail program in about-equal shares. With the jail population of 1000, approximately 20% are female. The numbers of men in the program have increased over four years, first from 20 to 30 and now to a consistent 40. This means men have the potential to graduate 120 each year. The women are up to 10 after the first 7 weeks and seek a population range between 15 and 20, an ambitious effort. Over 400 men have completed their Program in the four years of its existence, and about half of those have remained clean and sober for at least a year after completion.

The jail program staff comprises an extraordinary group of excited, grateful, gifted and hard-working people. Above all, every one of them seeks to be useful to his or her clients in a manner that may point the way for a miracle to occur in the life of those who desperately need one.

Did you know... In 2005, 1,746 different men entered the men's facility. Of these, 144 entered twice, 14 entered three times and three entered four times.

Gerard's Story

“...I have remained drug and alcohol free for 16 months. That truly is a miracle...”

My name is Gerard, and I am a grateful recovering addict. If it were not for the grace of God and the Hope Center, I would not be what I am today.

Although both of my parents were hard workers they got divorced when I was 13. That left me without any parental supervision throughout my teenage years. I began using drugs and alcohol at the age of 14 and continued to do so for the better part of my life.

The effects of my drug use became apparent in high school when I was kicked out in the 11th grade. I later joined the U.S. Navy in an attempt to get my life in order. In the Navy, drug use was difficult, so I drank instead and became an alcoholic.



I always held good jobs and was a hard worker. I even had my own painting and contracting business for about eight years. In my opinion my life was manageable. It was during this period that I began using crack cocaine, which led me to my path of self destruction. It quickly consumed my daily life, and everything I had worked for was lost.

I did the only thing I knew to do, which was to run away from my problems. The one thing I didn't realize is that I couldn't run from myself.

I moved to Kentucky in 1994 thinking I would be safe from the type of environment I was accustomed to. That only lasted a short period of time. I started drinking and using prescription drugs on a regular basis. About two years later, I found crack cocaine again and my life spiraled out of control.

In 2000 I finished my first jail sentence of 12 months. It was then that I was introduced to the Hope Center. For the first time in my life I was

homeless, and if it wasn't for the Hope Center I would have been sleeping on the streets.

Although I barely noticed it at the time, I became aware of the drug rehabilitation program the Hope Center offered. This later proved to be the most beneficial thing to happen in my life.

For the next five years I continued to live a life solely based on feeding my addiction. I spent most days running the streets in an attempt to satisfy my wants and needs, but most of all in hopes to get my next fix. I managed to amass a 22-page police record.

Somehow, I managed to manipulate my way out of any serious trouble until January of 2005 when I was arrested and charged with my second felony. I found myself facing 5 to 10 years, and this time I wasn't able to talk my way out of it. I suddenly realized how unmanageable my life truly was.

Fortunately for me, there was the Hope Center recovery program at the detention center. This program literally saved my life. Prior to this time, I had attempted to get clean by my own methods. Each time I was unsuccessful. The program not only addressed my addiction to drugs, it focused on my main problem, which was me and my way of thinking.

Since completing the program, I have become a productive member of society. I am now able to have meaningful relationships with other human beings. I am currently employed. I have my own apartment at Hill Rise Place. I finally have an understanding of and a relationship with God, something I was unable to do prior to completing the program.

Most importantly, I have remained drug and alcohol free for 16 months. That truly is a miracle, based on my past. It is impossible for me to share everything the Hope Center has done for me, but I am truly blessed. I cannot put a price on the new freedom and new happiness that I am experiencing today.

Did you know... Of the men entering the Hope Center in 2005, 22% had a history of mental health issues, and 58% reported a history of substance abuse.

With gratitude to our donors...

Every gift to the Hope Center is a mark of faith in the human spirit.
We are thankful for every gift and every giver.

Gifts of \$100,000+

Anonymous Mr. R. Douglas Ezzell

Gifts of \$10,000 to \$99,999

Ball Family Charitable Foundation, Inc. Ball Homes Bloodstock Research Information Blue Grass Community Foundation Christian Word Ministries Community Foundation	Estate of Alma Speaks Estate of Haldon Pinkston, Jr. First Presbyterian Church Foundation For Drug Free Youth Kentucky Peer Assistance Program for Nurses, Inc.	Mr. & Mrs. R.W. McCornack Minnifield-Cutter-Ball Dr. and Mrs. George W. Privett, Jr. Republican Party of Kentucky Rood & Riddle Equine Hospital Second Presbyterian Church
--	--	---

Gifts of \$5,000 to \$9,999

Mr. Malcom Blevins Mr. & Mrs. Timothy Cambron	Christ Church C.R.O.S.S. Ministries Mr. Russell Davis	Mr. Jonathan K. Kern Toyota Motor Manufacturing
--	--	--

Gifts of \$2,000 to \$4,999

Audio Authority Central Christian Church Mr. Harry Cohen Ms. Susan M. Forrester Mr. & Mrs. William R. Garmer	Good Shepherd Episcopal Church Guy-Ezzell Agency Inc Hartland Hills Chapel Members Mr. & Mrs. Lionel Hawse John Parker Pope Foundation	Neurodiagnostics PSC Nursery Place LLC Dr. & Mrs. Jeff Pumphrey Mrs. Angela Rice Dr. & Mrs. W. Thomas Riddle Samaritan Gift Shop, Inc.	Southcreek Properties Dr. & Mrs. Robert Straus Thomas & King, Inc. Trans-Link, Inc. Whitaker Foundation, Inc. Woodland Christian Church
--	---	---	--

Gifts of \$1,000 to \$1,999

Arlington Christian Church Avant Travel Agency Bluegrass Runners Mr. & Mrs. Randy Troy Breeding Mr. & Mrs. Bill Bridges Castleton Lyons, Inc. Catholic Social Services Bureau Central Bank & Trust Co. Central Kentucky Ear Nose and Throat P.S.C. Citizens Commerce National Bank Colorectal Surgical Association, P.S.C. Commercial Property Assoc. of Lexington Ms. Kate Covington Mr. Henry E. Cravens	Crestwood Christian Church Crutcher Family Foundation Daniel Family Foundation Daybreak Community Church Mr. Samuel T. Delaney Don Jacobs Used Cars Mr. and Mrs. Cecil F. Dunn Ms. Clara G. Dupree Edmon Design Mrs. Pamela Evans Fifth Third Bank Mr. & Mrs. Jim Gardner Gem Source GVS Foundation Mr. & Mrs. Frank Hamilton Mr. & Mrs. Hilton Hastings Health South Lexington Surgery Center	Healy Family Foundation Ms. Debra Hensley H. Terry Huey Mr. & Mrs. David Hulse Mr. James G. Kenan, III Kirkpatrick & Co. Mr. & Mrs. Charles Kratzer Mr. Robert Langley Louie's Flower Power Shop Mrs. Ann Bakhaus McBrayer Melaleuca, Inc. Mrs. Robert E. Milward Mr. Jack Mortenson Mrs. Mary Cooper Mowery National City Bank Mr. & Mrs. J. J. Noval Pain Treatment Center Physicians Services	Psimer and Associates, Inc. Mr. William N. Rich Mr. Corey Rodgers Mr. & Mrs. Daniel Rodrigue Mr. Robert Rodriguez Mr. & Mrs. William Rouse Mrs. Julie Sebastian Mr. & Mrs. DeLeon Shepherd COD Class - Southland Christian Church The HEP Foundation Mr. & Mrs. Derek D. Vaughan Ms. Debbie Winslow Mr. Brian Wood Mr. & Mrs. Richard L. Yelton
---	---	---	---

Did you know... The federal definition of a homeless person includes: An individual who lacks a fixed, regular, and adequate shelter; an institution that provides a temporary residence for individuals intended to be institutionalized; or a public shelter.

With gratitude to our donors...

Gifts of \$500 to \$999

Mr. William E. Adkins Atkins Real Estate B.R. Pollock Inc. Mr. & Mrs. Michael Bardo Dr. Anthony Bastecki Dr. & Mrs. Walter Brewer Broadway Christian Church Ms. Carolyn Brock Ms. Alana Browning Bryan Station Baptist Church Mr. & Mrs. John Burkhard Mr. John Burrus Ms. Anna B. Campbell Christopher Hill and Assoc., P.S.C. Mr. & Mrs. Todd Jeffrey Clark Compass Financial Consulting, Inc. Mr. W. T. Congleton Mr. Thomas M. Cooper Mr. Raymond Daugherty Don Jacobs Volkswagon BMW & Honda	Mr. & Mrs. Philip Dow Dr. Eric Durbin Energy Insurance Agency Ms. Elaine Feeney Gethsemane Lutheran Church Ms. Sara Gilliam Mr. Ambrose W. Givens Ms. Betty Glidewell Mr. & Mrs. Arthur E. Graham Mr. & Mrs. Rick Griffith Ms. Liz Harper Mr. & Mrs. Steve Heller Mr. Matthew L. Heuser James Motor Company Ms. Janice James Mr. Robert E. Lancaster Ms. Kathy Loeb Ms. Marilyn Machara Mrs. Ann Maggard Mr. & Mrs. Robert Maxwell Mr. Walter W. May McBrayer, McGinnis, Leslie & Kirkland	Mr. & Mrs. Brian McCarty Dr. Craig J. McClain, M.D. Ms. Sharon McGuire Mr. & Mrs. Richard McNally Milestone Realty Modern Radiology, PLLC Mr. & Mrs. Johnny Morgison Mr. Timothy A. Mowery Mr. Wayne Musick Mr. Richard Newman Mr. & Mrs. Norman Newton Old Paris Road Church of God Open Door Class - Southland Christian Church Ms. Julane Parker Pat Bloom Fellowship Group Ms. Vanessa Raven Perry Mr. & Mrs. Randolph E. Pittman Plastic Surgeons of Lexington, PLLC Mr. Robert Pollard Mr. & Mrs. Donald E. Ralph	Ms. Debbie R. Roark-Sutherland Rosemont Baptist Church Leslie Rosenbaum Mr. & Mrs. Joseph J. Seidel Mr. & Mrs. James B. Smith Mr. & Mrs. W. James Sprow, III St. Luke United Methodist Church Mr. & Mrs. Dan Sutch Mr. Kenneth R. Taylor The Wood Group, LLC Vescio's Tree Top Landscaping Vincent Fister, Inc Wal-mart Foundation Mr. & Mrs. Robert M. Watt Mr. & Mrs. J. David Whitehouse Mr. & Mrs. Frank L. Wilford Mr. & Mrs. W. L. Woodward
---	--	--	---

Gifts of \$100 to \$499

1st Stop Auto Care Center, Inc. Mr. & Mrs. Ance Abner Shirley Adair Mr. Lanny Adkins Aesthetic Skin Center, LLC Mr. & Mrs. David M. Aldridge Mr. John Aldridge Ms. Alberta Allen Mr. & Mrs. Ronald Allen Mr. & Mrs. Alonzo Allen Alpha Delta Chapter of ADK Alterations and Sew Much More Dr. Donald Ambroziak Ms. Christine Anderson Mr. & Mrs. Steven Anderson Angelucci Company Mr. & Mrs. Bob Ansley Ms. Tiffany Antrobus Mr. & Mrs. Bob Arnold Mr. A. T. Arnold Ms. Oneida Arosarena Associated Family Dental Care Mr. & Mrs. Ronald Atwood B.W.E. Institute of Lexington Mr. Larry G. Baber Mr. & Mrs. Glen Bagby	Ms. Neva House Bailey Mr. & Mrs. Benjamin R. Baker Mr. James Baker Mr. E. Lee Baker Ms. Catherine Ball Mr. Michael Baltenberger Mr. Larry Barker Ms. Jan Barna Shawn Barnes Mr. Bernard Barron Mr. & Mrs. Raymond Barry Bart Peak SS Class Mr. & Mrs. Robert Barton Ms. Melody Bates Mrs. Suzanne J. Bauer Mr. Kenneth A. Beals Mr. John Beard Beaumont Presbyterian Church Mr. Harold Becker Carla M. Beckwith Ms. Jessica Gay Bell Mr. & Mrs. T. Bruce Bell Mr. Gordon Bell Mr. & Mrs. Gary D. Bello Mr. and Mrs. Hugh Bennett Ms. Ruth Berry Mr. David Berry	Mrs. Neil Bertram Dr. & Mrs. David Bettez Mr. & Mrs. Glenn Birdwhistell Mr. & Mrs. Cary Blankenship Mr. & Mrs. Jack Blanton Ms. Shelby Blevins Blue Star Plastics Bluegrass Believers #657 Bluegrass Sams Chapter 02 Bobby and Iva Smalls Barber Shop Ms. Shirley Boggs Mr. & Mrs. Drew Boggs Mr. & Mrs. Russell Bogue Mr. John Bolash Mr. & Mrs. Theodore L. Bolling Dr. James L. Borders Ms. Pat Borg John E. Boso Mr. Peter Bosomworth C. Richard Bowers, Jr., M.D. Mr. & Mrs. Jim Bowman Lee Willey Bowman Ms. Paula Bracken Mr. & Mrs. Guy Bradley Dr. Haley Bradley Mr. & Mrs. Lewis Brashear	Mr. Robert M. Brewer Ms. Anita M. Britton Mr. Charles Brockman Mr. & Mrs. Michael Brodfuehrer Ms. Gretchen Marcum Brown Mrs. Sandra H. Brown Mr. & Mrs. David Brown Mr. Norman L. Brown Dr. & Mrs. Brian Brown Ms. Margaret Browning Ms. Janet Brumfield Mr. Terry Bryant Ms. Evelyn H. Buchanan Ms. Alice D. Buchart Mr. Harold J. Buchignani Mr. & Mrs. Mike Buckley Mr. & Mrs. C Kelly Buckley Ms. Betsy Brooks Bulleit Mr. Mike Bullock Mr. & Mrs. Ronnie Bunch Ms. Anita Burgess Mr. Robert L. Burns Don Burton Mr. & Mrs. Lowell Bush Mr. Greg S. Butler Ms. Gail Buttery Mr. Franklin Dee Caldwell
---	---	---	---

With gratitude to our donors...

Gifts of \$100 to \$499

Mr. Danny Caldwell
Mr. Luther Caldwell, Jr.
Bret A. Caller
Calpare, Inc. DBA
Schlotzsky's Deli Lexington
Calvary Church Of
The Nazarene
Mr. & Mrs. William F. Campbell
Mr. & Mrs. Michael F. Campbell
Mr. Rutheford B Campbell, Jr.
Mr. Deno C. Capello
Cardiology Associates
of Lexington, PSC
Mr. & Mrs. Michael Carlisle
Mr. & Mrs. Bob Carpenter
Mr. Carlos Carroll
Dr. William H. Carter
Ms. Denise Carter-Brooks
Junior Carty
Ms. Rita Cash
Ms. Dianne Cash
Mr. & Mrs. J. Larry Cashen
Mr. Coburn Cashman
Mr. & Mrs. Pete Cassidy
Mr. William M. Cassity
Derriel Castle
Ms. Amelia Catesby
Mr. Tommy Catlett
Caudills Climatemaster
Billie Jean Cawood
Mr. & Mrs. Judson Chalkley
Mr. Mark Chambers
Ms. Marsha J. Charles
Mrs. Ashley Charles
Chick-fil-A
Mr. Norman Chrisman, Jr.
Christ Centered Church
Mrs. Evelyn Christensen
Christian Homebuilders Class
Ms. Elizabeth Churchhill
Ms. Deena Clark
Mr. Danny M. Clark
D Kay Clawson
Mr. James E. Clay
Mr. & Mrs. Dennis Clouthier
Mr. & Mrs. Douglas Cobb
Mr. William E. Cobb
Ms. Mary Cole
Mr. Charles T. Collier
Mrs. Wanda Collins
Mr. Thomas P. Collins
Mr. Patrick F. Collins
Mr. Delwood Collins
Mr. & Mrs. Jim Columbus
Ms. Dairylyn Combs

Mr. S. Sayre Combs, Jr.
Community & Economic
Development Assoc., Inc.
Mrs. Marian Harris Congleton
Mr. & Mrs. Gary Conn
Mr. Charles C. Conn
Mr. Michael Conrad
Mr. & Mrs. Gary Convis
Mr. & Mrs. Kent Coogle
Mrs. Cheryl Cooper
Mr. & Mrs. William Cooper
Mr. & Mrs. Robert Cornell
Ms. Helen Cornish
Ms. Evelyn Cornish
Mr. Charles Cosby
Mr. & Mrs. Patrick Costello
Mr. & Mrs. C. Milton
Coughenour
Mr. David Coughlin
Ms. Jane Lee Courtney
Mr. & Mrs. Robert E. Courtney



Mrs. Barbara Cowden
Tynia Cowgill
Ms. Lucy Cox
Mr. James Dale Creech
Mr. Braxton Crenshaw
Janice Crouch
Mecia Crutcher
Cumberland Surety
Insurance Co.
Ms. Julie Thomas Cummins
Mrs. Elizabeth Curlin
Mr. Ralph Currie, III
Mr. Charles Curtis
Mr. Harold T. Daniel
Mr. & Mrs. John Darnell
Mr. & Mrs. Charles A.
Daugherty

Daugherty Petroleum, Inc.
Ms. Sarah Davis
Ms. Mary J. Davis
Mr. & Mrs. Wayne Davis
Mr. & Mrs. Eberley Davis
Mr. Kenneth Dawkins



Ms. Ann H. Downing
Mr. David Drake
Mr. & Mrs. Jack O'Neil Duff
Mr. Tom Duncan
Ms. Katherine Dunn
Mr. & Mrs. Thomas J. Dunn

Ms. Teresa S. Durbin
Ms. Gloria Durham
Mr. David Duzyk
Mr. & Mrs. Peter Dykal
E A Partners
E.J. Bestos, Inc.
Eastminster Presbyterian
Church
Mr. & Mrs. Bruce Eastwood
Mr. & Mrs. William T. Eblen
Mrs. Yvonne Edge
Mr. Chris Ekris
Donna Redd Elder
Mr. & Mrs. Larry Elliott
Mr. & Mrs. Guy Ellis, III
Mr. William R. Embry
Mr. & Mrs. Scott Emerson
EMG 108 Inc.
Sarah Emmons
Employees of Mike Fister
Enlow & Enlow, PLLC
Mr. Tim Enoch
Mr. & Mrs. Randy
Charles Ensley
Episcopal Women of
Christ Church
Avichai Eres
Ria E. Eugenio, MD, PSC
Ms. Vicki Evans
Dr. & Mrs. Daniel Ewen

Did you know... While 74% of Hope Center women clients in 2005 reported having children, only 3% reported having custody of those children.

With gratitude to our donors...

Gifts of \$100 to \$499

Mrs. William Ezzell
Mr. Harry Winston Faircloth
Faith Evangelical
Lutheran Church
Mr. & Mrs. Donald Falace
Families Anonymous Group 515
Mr. Reed Farley
Mr. & Mrs. E. Lambert Farmer

Mr. Gary B. Fulcher
Mr. Richard W. Furst
G & G Electrical, Inc.
Gaye E. Gabbard
Mr. Miles Gaines
Mr. Stan Galbraith
Mr. Harold Galloway
Mr. David Gammon

Mr. Calvin Grayson
Mr. & Mrs. Tim Green
Mr. Hubert Green
Greentree Homemakers Club
Ms. Margaret Greynolds
Griggs Management
Company, Inc.
Ms. Pam Grizzle
Mr. & Mrs. Lynn E. Grogan
Jolene B. Grogan
Mr. & Mrs. Raymond Grott
Mr. & Mrs. Vincent S.
Guagliardo
Robert Guckenberger
Mr. Thomas Guskey
Mr. & Mrs. Robert D. Guthrie
Timothy F. Guthrie
Ms. Teresa Haggard
Mr. & Mrs. Richard Hall
Mr. Tommy R. Hall
Lennie Hamilton
Ms. Alice Hanley
Mr. & Mrs. Charles Hanna
Mr. & Mrs. Gary L. Hansen
Bev Hardin
Mr. & Mrs. Harold D. Hare
Mr. & Mrs. Donald Harkins
Mr. Joshua Harlan
Mr. & Mrs. Richard Harr
Ms. Jane Harris
Mr. Russell Clay Harris
Kendall Hart
Mr. Jefferson Hartzol
Mrs. Billye M. Haslett
Ms. Aimee M. Hatfield
Ms. Leah Hawkins
Dr. David A. Hawse
Mr. Steve Haydon

Ms. Gayle Haynes
Mrs. Elizabeth Headley
Mr. H. Price Headley
Mr. & Mrs. Gerald F. Healy, III
Mrs. Claudia Heath
Mr. Ben Hek
Mrs. Mary Hemken
Mr. & Mrs. Carl E. Henrickson
Mr. & Mrs. G. Edward Henry
Ms. Katie Herkamp
Hershey Enterprises, Inc.
Mr. & Mrs. Robert A. Heym
Highlands Baptist Church
Mr. Willie Hill
Hillwood Holdings
Mr. Troy G. Hinkle
Hisle & Company
Mrs. Roberta Hodge
Mr. Raymond Hodge
Ms. Harriett Holladay
Mr. Harry Dale Holland
Mr. William Hollars, Jr.
Mr. & Mrs. James Holmes
Mr. Charles Holmes
Hoover's
Mr. Edward Hopper
Mr. & Mrs. William Hornbeck
Houlihan Insurance Agency
Mr. F. Thomas Howard
Mr. Michael Hudson
Mr. Robert Huffman
Ms. Ann B. Humble
Ms. Carole Humkey
Ms. Joneva Hungerford
Ms. Rita Hunter
Ms. Judi Hunter
Ms. Aubrey Elizabeth Hunter
Hunter Presbyterian Church



Mr. & Mrs. Philip E. Fay
Ms. Carol Fening
Mr. & Mrs. Curte Ferguson, Jr.
Mr. David Fields
First Security Alumni Club
Mrs. Edna Fischer
Dr. & Mrs. Doane Fischer
Mr. & Mrs. W. D. Fishback
Mr. Robert Fitz
Mr. & Mrs. Kermin E. Fleming
Mr. Robert Fleming
Fleming County Chrysler
Ms. Dana Fletcher
Mr. & Mrs. Jim Flora
Mr. & Mrs. Maurice E. Foley
Ms. Mary Foreman
Mr. & Mrs. George Foreman
Prof. William H. Fortune
Mr. Robert E. Fox
Mr. & Mrs. Warren Frank
Mr. David A. Franklin
Mr. & Mrs. Irving Frary
Mr. & Mrs. W.E. Frazier
Mr. & Mrs. Andrew Fried
Mr. & Mrs. Gilbert Friedell
Jerry Fritz
Mr. & Mrs. Joseph B. Fugate
Mr. & Mrs. Frank J. Fugazzi

Gap Foundation
Ms. Connie Gardner
Mr. & Mrs. Edward Gardner
Garmer and O'Brien
Mr. & Mrs. Michael L. Garner
Mr. & Mrs. Jeffery Garrett
Ms. Peggy A. Gay
Mr. & Mrs. Wayne Gebb
Ms. Evelyn D. Geller
Mr. Edward Gentry
Joyce George
Geralds Jones Swisher
& Rohlfig P.S.C.
Mr. David Gerrein
Mr. John F. Gettler, Jr.
Mr. Gregory Gilliam
Ms. Lisa Gilliam
Mr. & Mrs. Duane Gillum, M.D.
Robert Gilmore
Mr. Howard Glauert
Ms. Holiday K. Glenn
Ms. Sandra W. Godecker
Ms. Karen Goodlet
Mrs. Thelma E. Goold
Ms. Jacquelyn Graves
Mr. & Mrs. Joseph Graviss
Mr. James Gray
Ms. Jana Grayson



Did you know... Just over 90% of the women entering the Hope Center in 2005 reported having no income.

With gratitude to our donors...

Gifts of \$100 to \$499

Meldin Hutchens
Mr. David Hyman
Immanuel Baptist Church
Mr. & Mrs. Thomas Inabinet
Jay E. Ingle
Mr. & Mrs. Robert Ireland
Mr. Jack Isaacs

Mr. Mark Keinath
Mr. & Mrs. James E. Keller
Mr. & Mrs. Patrick Kelly
Mr. Tim Kelly
Mr. Stephen C. Kelly
John David Kelly
Mr. & Mrs. Ralph Kelty

Mr. Loran E. Kirkwood
Mr. Daniel Kiser
Ms. Mary Ellen Klatte
Ms. Dorothy Kline
Dr. & Mrs. James Klyza
Koinonia Class
Mr. Kevin Kok
Dr. Steve Kraman
Mr. & Mrs. Frank Kramer
Ms. Sharon Krimm
Mr. Don Krish
Ms. Barbara Kucera
Mr. Bailey Kurtz, Jr.
Mr. & Mrs. Paul Ladd
Ladies' Sunday School Class,
Christ Centered Church
Mr. Richard Lamey
Mrs. Sue Lancaster
Mr. & Mrs. John Lancaster
Lane Consultants, Inc.

Mr. & Mrs. Harold Letton, Jr.
Mr. & Mrs. Glenn Leveridge
Mr. & Mrs. Erle Levy
Ms. Jennifer Lewis
Ms. Barbara Lewis
Lexair, Inc.
Lexington Coal Exchange
Lexington Friends Meeting
Lexington Korean Presbyterian
Lexington Lioness Club
Lexington Windows and Siding
LFUCG
Mr. & Mrs. Robin Lilly
Ms. Sharon Locker
Mrs. Anna Lee Locklar
Mr. & Mrs. Harry Lockstadt
Dr. William F. Loggins
Ms. Mary R. Long
Ms. Dorothy Long
Mr. & Mrs. Harold Love



Mr. & Mrs. James Ishmael, Jr.
Mr. Wilson Jackson
Mr. Henry Jackson
Ms. Sue Jacobs
Ms. D. La Vonne Jaeger
Ms. Patricia S. Jagers
Ms. Roberta James
Lee Jinright
Ms. Ruth Johnson
Ms. Holly Johnson
Ms. Elsbeth Johnson
Mr. & Mrs. William E. Johnson
Mr. Steven D. Johnson
Mr. Odell Johnson
Mr. John W. Johnson
Mr. David Johnson
Amy Johnson
Ms. Louise Coleman Jones
Ms. Gayle L. Jones
Mr. & Mrs. J.S. Jones
Dr. Randall S. Jones
Mr. & Mrs. J. Mark Jozefowicz
Bridgette Justice
Justice Real Estate
Mr. Jeffrey Kadison
Ms. Melinda Karns
Mr. & Mrs. Edward Kasarskis
Mr. & Mrs. Phillip Kearns
Mr. James T. Keffer

Mr. James Kemp
Ms. Carolyn Kemper
Kentucky Dermatology
Cosmetic Surgery Center
Ms. Georgia Kenyon
Ms. Etta Ruth Kepp
Thomas B. Kessinger
Keystone Club
Mrs. Rhonda Kincaid
Jane Kincaid
Mr. & Mrs. Burton Kincheloe
Mr. Andrew Kinee
Mr. & Mrs. Kenneth Kinghorn
Mr. & Mrs. Robert Kintner



Ms. Martha A. Lange
Ms. Machele Lawless
Ms. Elisabeth Garr Lawrence
Mr. Isaac Lawrence
Mr. & Mrs. Wade Lawson
Mr. & Mrs. Robert Lebar
Ms. Sharon Ledford
Mr. Larry W. Lee
Ms. Virginia Leeper
Ms. Darlene Leet
Ms. Elizabeth Leggett
Mrs. Carol Leinenbach
Mr. & Mrs. Nelson Leonard
Mr. Thomas Lett

Mr. David Lowry
Ms. Anna B. Lucas
Mr. Bob Lucas
Mr. & Mrs. Daniel Luchtefeld
Mr. & Mrs. Alfred Lutz
Lydia Class -
Rosemont Baptist Church
Hope Lykins
Mr. & Mrs. Richard J. Lyon
Mr. Edmund Lyon
Mr. & Mrs. Joseph H. Lyons
Ms. Phyllis MacAdam
MacFarlan Machinery, LLC
Mr. & Mrs. Roy Madden
Mr. Charles Maddox
Joann Maddox
Ora Main
Mr. James Marcum
Mr. Fletcher Mark
Dr. Abby Lindsey Marlatt
Mr. Douglas Marshall
Mr. Barry Marshall
Martha Darnell Bible Class
Ms. Caroline Martin
Mr. & Mrs. Lawrence S. Martini
Mr. & Mrs. Charles Martz
Ms. Shelia Mason
Mr. Randal Master
Ms. Vinne Joyce Mathews
Mr. Adam L. Matney
Mr. James Matthews
Mr. John Mattmiller
Maxwell Street
Presbyterian Church
Mr. & Mrs. Kenneth E. Mayer

Did you know... The Hope Center distributed 24, 247 items of clothing at its men's facility in 2005.

With gratitude to our donors...

Gifts of \$100 to \$499

Mr. & Mrs. Barry L. Mayfield
Mr. & Mrs. Dennis McAlister
Mr. & Mrs. Charles McCann, Jr.
Mr. Brian McCarty
Ms. Ann S. McClain
Mr. & Mrs. Jim McCormick
Ms. Mary McDaniel
Ms. Luella McDonald
Mr. Charles McEachin
Mr. & Mrs. Stephen McEldred
Mr. & Mrs. Marcus McEllistrem
Ms. Mary McGann
Mr. & Mrs. Charles McGaughey
Mr. Jay McKay
Mr. Leo McMillen
Ms. Kim McNabb
Ms. Linda McNees
Mr. & Mrs. J.B. McNutt
Charles McSpadden
Mr. & Mrs. Robert E. Meade
Meadowbrook Ladies
Golf League
Mr. & Mrs. Terry Meckstroth
Meg Sprow Interior Design
Member's Heritage Federal
Credit Union
Ira P. Mersack
Ms. Dorothy Mickelberry
Ms. Barbara Middleton
Mr. & Mrs. Valva C. Midkiff
Ms. Sylvia Milburn
Ms. Janet Miller
Mr. & Mrs. Mark E. Miller
Mr. & Mrs. Benson Miller
Mr. & Mrs. John B. Milward
Minuteman Press
Julie C. Mitchell
Ejna Mitchell
Ms. Jean Monaghan
Mr. & Mrs. Joseph
Montgomery, Jr.
Ms. Catherine Monzingo
Ms. Donna Moore
Ms. Alicia Moore
Mrs. Patricia H. Moore
Mr. & Mrs. Paul A. Moore
Mr. & Mrs. Glenn Moore
Mr. Howard A. Moore
Mr. Franklin Moosnick
Ms. Maryrhea Morelock
Mr. & Mrs. Kolan Morelock
Mrs. Allison Batton Moreman
Mrs. Kimberly Morgan
Mr. & Mrs. Jerry A. Morgan
Mr. Kenneth Morgan

Jean Morgison
Florence Morguelan
Mr. & Mrs. Leslie Morris
Dr. Jeffrey Moscow
Mt. Horeb Presbyterian Church
Mr. Bryant Mucci
Ms. Sandra Muenks
Adeline Muir
Mr. Elsber Mulligan
Mr. & Mrs. Harold Mullis
Ms. Shelby Murphy
Mr. & Mrs. Robert Murphy
Mr. Howard Myers
Don Myers
Mr. Timothy Nance
Mr. & Mrs. Mark Nason
Mr. & Mrs. Mike Neal
New Balance Lexington
Mr. Larry D. Newman
Mr. A.J. Newton
Billie Ware Newton
Mr. & Mrs. George Nicholson
Kelly Nicol
Mr. & Mrs. Bill Nighbert
Nike Employee Matching
Gift Program
Ms. Jane Lee Nimocks
Mr. & Mrs. Jere B. Noe
Dr. Jacqueline Noonan, M.D.
Mrs. Kimberly Norris
Northeast Christian Church
Mr. Richard E. Nuhan
Oak Factory Outlet
of Lexington
Mr. William Offutt, IV
Ms. Anna Oliver
Francisco S. Ong
Mr. Donald E. Oswald
Ms. Sandy Owens
Ms. Barbara C. Owens
Mr. & Mrs. Thomas R. Padgett
Padgett Construction, Inc.
Paicalree, Inc., DBA
Schlotzsky's Deli Lexington
Judge Lewis G. Paisley
Palmer & Kay
Panelectric Heating Systems
Parents Without Partners
Ms. Shari Mountz Paris
Mr. Kenneth Parker
Mr. Don Parkerro
Ms. Susan Parrish
Mr. & Mrs. Ben G. Pastrick
Mr. & Mrs. Carl Patterson
Mr. & Mrs. L. Edwin Paulson

Mrs. Kimber Payne
Ms. Blondina Peckham
Mr. & Mrs. Dennis L.
Pennington
Mr. Richard Peot
Ms. A. Victoria Perkins
Mr. Larry Perkins
Mr. & Mrs. Robert Perry
Mr. & Mrs. George Peters, III
Ms. Martha Peterson
Ms. Betty Peterson
Mr. William A. Peterson
Mr. Herbert C. Petterson
Mr. H. Foster Pettit
Mr. & Mrs. Steve Pewitt
Mr. William G. Pfeifle
Ms. Jennifer Picinich
Mr. & Mrs. Dennis Pickett
Mr. Dennis Pike
Johnathan A. Pinczewski
Pitche

Dr. Daniel Primm, Jr.
Ms. Heidi Privett
Mr. & Mrs. Tony Privett
Qualified Plan Services, Inc.
Mr. David Quarles
Mr. Rick Queen
Ms. Helen Raber
Ms. Stephanie Raglin
Dr. & Mrs. C. Edward Rankin
Mr. Bill Rea
Mr. Bruce Rector
Mr. & Mrs. Michael Reed
Remedy Staffing
Mrs. Ann Render
Mr. & Mrs. James Render
Ms. Christyn Renfroe
Amy Renfrow
Ms. Jill Riccardo
Ms. Margaret Rice
Mr. & Mrs. Larry Rice
Mr. Steven E. Rice



Mr. Bob Pitman
Mr. & Mrs. James K. Pleasants
Ms. Kathy Plomin
Mr. & Mrs. Rod Polk
Mr. Charles Porter
Talmadge Porter
Mr. & Mrs. Woodford Portwood
Mr. Wallace Possich
Ms. Helen C. Powell
Mr. William Powers
Prairie Management and
Development, Inc.
Mr. Ray Prather
Presbyterian Women
Mr. Robert M. Preston
Ms. Janice M. Prewitt
Mr. Robert Prewitt
Mr. & Mrs. Herndon Price

Mr. Eric Rice
Mr. Ted Richardson
Richmark Enterprises
Ms. Patricia B. Riddle
Ms. Doretha H. Riffle
Mr. David Riherd
Mr. & Mrs. Scott Riley
Mr. & Mrs. Ron Ring
Dr. Edward Ritchie
Ms. Peggy Roach
Dr. & Mrs. Ben Roach
Ms. Danica Roark
Lowell D. Roark
Mr. & Mrs. John Roberts
Alan Carter Roberts
Mr. & Mrs. William C.
Robertson
Ms. Glorice Robinette

Did you know... At the men's facility and women's facility combined, the Hope Center served 224,286 meals in 2005.

With gratitude to our donors...

Gifts of \$100 to \$499



Ms. Kimberly Robinson
Ms. Nancy Rocke
Mrs. Carmen Rogers
Mr. Glenn Rogers
Mr. Paul Rose
Dr. Harriet Rose
Ms. Barbara Rosenbaum
Mr. & Mrs. Joe L. Rosenberg
Mrs. Barbara Ross
Mr. George Ross
Ms. Sherri L. Rowland
Mr. David Royse
Mr. Michael Ryan
Mr. Dag Ryen
Mr. Arthur Salomon
Ms. Glenna R. Salyer
Mr. & Mrs. John Saunders
Ms. Barbara Scherrer
Mr. Buddy Schneider
Ms. Patricia J. Schwab
Analy Scorsone
Mr. & Mrs. Michael J. Seiler
Mr. Howard Settle
Mr. Edmond Severs
Ms. Jean Shanks
Ms. Martha Shaw
Mr. & Mrs. Robert W. Shaw
Mr. & Mrs. Robert Shay
Ms. Dianne L. Shearer
K. Sheehan
Mr. D.B. Shelton
Libbie A. Sherman
Ms. Diane M. Shernisky
Ms. Rosita Shields
Mr. & Mrs. John Shiffler
Shiloh Baptist Church
Mr. Charles Shropshire
Kristy Kate Shutts
Mr. Timothy L. Simmons
Mr. Steve Singleton
Mr. & Mrs. James Sizemore

Ms. Rachel A. Sloan
Mr. Donald E. Slone
Parley Smiley
Ms. Virginia L. Smith
Mrs. Tonya Smith
J. C. Smith
Smith and Smith Funeral Home
Mr. & Mrs. Harold Snider
Ms. Virginia Snyder
Ms. Susan Jo Snyder
Ms. Pat Souder
Mr. & Mrs. Don M. Soule
Mr. & Mrs. Eugene Southworth, II
Eula M. Spears
Ms. Janet Spencer
J. Tracy Spencer
Mr. & Mrs. Warren Spina
Mr. & Mrs. George Stakelin
Mr. & Mrs. Kirk Stechschulte
Mr. Alan Stein
Ms. Betsy D. Steiner
Ms. Janet M. Stemmer
Richard Stephenson
Ms. Joy Stevens
Mrs. Karen Stevens
Mr. & Mrs. David B. Stevens, M.D.
Sandy Stevenson
Ms. Cecelia Stewart
Mr. & Mrs. William J. Stober
Mr. Brian Stortzum
Mr. & Mrs. Joseph Straley
Mr. & Mrs. Jim Straub
Mr. & Mrs. E.H. Straus
Mr. & Mrs. Jeremiah Suhl
Mrs. Nancy R. Swisher
Mr. & Mrs. Carl J. Tackett
Doug Tackett
Tarvin Enterprises Inc.
Tates Creek - AP U.S. History
Ms. Donna Taylor
Ellsworth Taylor

Mr. Bill Terry
Mr. & Mrs. John Tewell
The Betty B. Meyer
Charitable Fund
The Church at Athens
The Trane Company
Mrs. Ellen Thomas
Mr. & Mrs. H. H. Thomas
Mr. & Mrs. Charles Thomas
Mr. William C. Thomas
Mr. Mark K. Thomas
Ms. Rebecca Thompson
Mr. Harvey Thompson
Mr. & Mrs. Nick Thompson, Jr.
Thoroughbred Coal Company
Ms. Pamala J. Thurman
Mr. & Mrs. William P. Thurman
Mr. & Mrs. James Tipton
Ms. Juanita Todd
Mr. & Mrs. Edward P. Todd
Ms. Michelle Toney
Tri-State Roofing
Ms. Jill Tucker
Mr. & Mrs. Daniel G. Tudor
Ms. Elizabeth Ann Tully
Mr. & Mrs. L. Wayne Tune
Mr. Robert J. Turley
Mr. William Craig Turner
Ms. Rebecca Turpin
UK Research
Ms. Mary Underwood
USDA NRCS
Employee Association
Mrs. Frederick Van Lennep
Mr. George Van Meter, Jr.
Nancy Vaughan
Ms. Marilyn Veatch
Mrs. Mary Sue Vicars
Mr. & Mrs. Cy Waddle
Mr. Donald D. Waggener
Mr. & Mrs. Donald P. Wagner
Mr. & Mrs. Ronald Wagoner
Ms. Wendy Walker
Ms. Retia D. Walker
Mr. & Mrs. Maurice Walker
Wayde Walker
Mary Walker
Mr. Tom Wallace
Mr. & Mrs. Michael Wallen
Ms. Brenda Walter
Mr. & Mrs. Theodore B. Walter
Mr. & Mrs. Joseph Walter
Mr. & Mrs. Charles E. Ward
Ms. Rebecca Warriner
Mr. & Mrs. Mike Wasson

Ms. Mary Wathen
Ms. Mildred Watson
Mr. & Mrs. Ben Watson
Ms. Lynn Weak
Ms. Betty Webb
Mrs. Esther J. Webb
Mr. Harold Weinberg
Mr. Art Weinberg
Mr. Gerald Weisenfluh
Mr. & Mrs. David Weisrock
Mrs. Linda Wells
Mr. & Mrs. J.M. Wells
Mr. Stephen Wells
Mr. & Mrs. J. Wenneker
Mr. & Mrs. Ned Werling
Jan Z. Wesley
Wesleyan Fellowship Circle
of First Methodist Church
Linsey W. West
Dr. & Mrs. Dennis Whaley
Mr. Jackson W. White
Ms. Martha E. Whitler
Mr. & Mrs. Clayton Whitney
Mr. & Mrs. Alan Whittington
Ms. Barbara H. Wiechers
William J. Martin & Associates
Ms. Diane R. Williams
Mr. & Mrs. Kenneth Williams
Mr. Joe Williams
Mr. David Williams
Areta Williams
Ms. Margaret Williamson
Mr. & Mrs. Alan Dale Wilson
Mr. Willis L. Wilson
Mr. William J. Wilson
Dr. & Mrs. Emery Wilson
Mr. Frank Winchester
Mr. & Mrs. Carrol Winger
Winter Quarter Farm
Mr. Douglass Witt
Women of the Church of God
Mr. Anthony Woomer
Ms. Elizabeth Wright
Tarrant & Combs Wyatt
Mr. & Mrs. Vernon Yaste
Cindee K. Yates
Ms. Dorothy Young
Mr. & Mrs. George Young
Carole Youngblood
Ms. Laura Zimmerman
Mr. & Mrs. James Zoll

Did you know... The Mobile Outreach team delivered 7,759 individual services from the HopeMobile in 2005.

With gratitude to our donors...

Gifts of \$1 to \$99

Mr. & Mrs. James Abbott
Mrs. Lisa Hahn Acree
Mrs. Heather Adams-Blair
Andrea N. Adkins
Ailesbury Holdings Ltd.
Mr. & Mrs. Denny Akers
Mr. & Mrs. Austin Alban
Ms. Katherine Albright
Ms. Ellen Allen
Ms. Ann Allison
Mrs. Dawn Alvarado
Mr. Fred Ament
Ms. Mary T. Anderson
Mr. & Mrs. Earnest Anderson
Dr. Sanford Archer
Robin Carrick Arehart
Dr. & Mrs. Paul Armstrong
Mr. & Mrs. Nick Arnold
Mr. & Mrs. William Arrowood
Mrs. Anne H. Atchison
Mr. & Mrs. Rex Bailey
Mr. & Mrs. Thomas Baird
Ms. Darlene Baker
Ms. Nancy Baker
Mr. & Mrs. Arnold Baker
Ms. Beverly Baldwin
Brandy E. Baldwin
Bank of the Bluegrass
Mr. & Mrs. Paul Banta
Jane M. Barber
Ms. Lloyd Anne Barker
Mrs. Margaret Barker
Mrs. Minda Barker
Ms. Dona Barkman
Mr. Howard C. Barnett
Mr. & Mrs. Richard Barnhisel
Ms. Barbara A. Barton
Mr. & Mrs. Michael Bassetti
Mrs. Sarah Bates
Mr. & Mrs. Martin Bates
Mr. Andrew Battista
Ms. Mary Belle Beam
Ms. Joanne Beidleman
Ms. Elizabeth Belanger
Mrs. Nancy B. Bell
Mr. & Mrs. Michael Bell
Mr. Mark Bell
"Mrs. Cecil Bell, Jr."
Mr. Dennis Bellamy
Ms. Eleanor H. Benblatt
Ms. Gail Bennett
Mr. & Mrs. C.A. Bentley
Angela S. Berkel
Mr. & Mrs. R. C. Billips
Mr. & Mrs. Ben Bingcang
Mr. Robert Barry Bingham
Mr. & Mrs. Charles Bishop
Ms. Katherine Black
Black Mountain Realty

Mrs. Patricia Blackburn
Ms. Jennifer Blake
Mr. & Mrs. Bob Blanchett
Mr. & Mrs. James M. Blanton
Mr. & Mrs. Kevin Bleuel
Mr. & Mrs. Paul Blodgett
Bluegrass Golden Age Group
Bluegrass Parrot Head Club
Mr. & Mrs. Gifford Blyton
Ms. Margaritte Bode
Mr. & Mrs. Ben W. Bonar
Ms. Nellie Boone
Mrs. Ella Bosley
Ms. Jody Bosomworth
Dr. Walter L. Boswell
Mr. & Mrs. Robert Bowman
Mr. & Mrs. Rickey Brackett
Mr. & Mrs. Christopher Bradley
Mrs. J. S. Brady
Mr. & Mrs. Stuart Bratcher
Mr. & Mrs. Stanley Briggs
Mr. & Mrs. Howard Bright
Mr. & Mrs. Fernando Briones
Mr. & Mrs. Charles Brock
Mr. & Mrs. William Brown
Mr. Charles N. Brown
Mr. Kenneth L. Brown
Mr. & Mrs. L. R. Brumfield
John Brumfield, Jr.
Mr. & Mrs. Charles Bruncker
Mr. & Mrs. Jared Bryan
Mr. & Mrs. Wallace Bryant
Mr. Bruce Bryant
Ms. Kim Bucci
Mr. & Mrs. David Burg
Ms. Diana L. Burke
Mr. & Mrs. Carl H. Burman
Mr. Louis Burns
Julie A. Butcher
Ms. Yvonne Butler
Mr. David Butler
Mr. & Mrs. Justin Byall
Mrs. Kimberly Cage
Melanie A. Cahill
Ms. Roxanne Cameron
Jennie E. Campbell
Mr. Richard Carey
Mr. Michael G. Carpenter
Jeanne Carr
Willie L. Carter
Cori Carter
Ms. Alberta Caskey
Mrs. Susan Cassell
Mr. & Mrs. Howard Cassidy
Chapter X, P.E.O. Sisterhood
Norma J. Childers
Mr. Michael Childress
Christ Church
Ms. Rebecca Christian

Christian Women's Fellowship of
Woodland Christian Church
Church Women United
Lexington Fayette Co.
Ms. Barbara Clark
Mr. William D. Clark
Mr. & Mrs. Matthew D. Clift
Mr. Frank Cloud, Jr.
Mrs. Kimberly Coffey
Mr. & Mrs. Bryan S. Coffman
Ms. Patricia A. Cole
Ms. Bess Colley
Mr. & Mrs. Scott Collins
Billie Colvin
Mr. William Shane Combs
Mr. & Mrs. Stephen Compton
Ms. Lynda R. Congleton
Ms. Allison Connelly
Ms. Margaret Connor
Mr. Nathan T. Cook
Ms. Faye M. Cooper
Mr. Michael K. Cooper
Mr. Martin Coppinger
K. A. Cormney
Mr. Arthur Cotterill
Mr. & Mrs. Kevin Coupal
Mr. & Mrs. Stuart A. Couve
Ms. Jeanne Cox
Ms. Crystal L. Coy
Dr. & Mrs. Bruce H. Coyer
Crawford Middle School
Ms. Margaret Crellin
Ms. Kara F. Cross
Mrs. & Mr. Anna Culler
Mrs. Kathryn D. Cunningham
Mr. & Mrs. Paul Curlander
Mr. & Mrs. J. P. Curless
Ms. Barbara Curnutte
Mr. Brad Curtis
Mr. & Mrs. William Curtsinger
Ms. Lorraine Cutter
Ms. Ruth Cutter
Mr. & Mrs. Mark Cutter
Mr. Bruce Dahlgren
Mr. & Mrs. Mark W. Dail
Mr. Harold Daniel
Blair Daniel
Mr. Craig L. Daniels
Darrell Stith and Samye Miller
Ms. Miriam David
Ms. Dorothy Davis
Ms. Heather Davis
Mr. & Mrs. John Davis
Mr. & Mrs. Robert Davis
Rebecca J. Davis
Olivia N. Davis
Mrs. Patricia Dawson
Mr. & Mrs. G. L. Dawson
Mr. David E. Dean

Ms. Regina Decker
Ms. Cynthia Deitz
Ms. Mary Delaney
Ms. Helen Denbo
Ms. Edith Dean Denson
Mr. Andrew D. Desimone
Mr. Robert Detro
Ms. Dawn Dever
Mr. R. H. Dever, III
Mr. & Mrs. Chad Dibble
Ms. Jane Dolan
Mr. & Mrs. William Donovan
Ms. Iris Doty
Mrs. Lynn Dowdy
Dreams International
Mr. & Mrs. Butch Droegr
Terry Dubois
Mr. & Mrs. Roland C. Duell
Ms. Marilyn Duncan
Mr. Mark Durbin
Mr. Mark F. Dyster
Brandy Eades
Ms. Billie F. Earnest
Mrs. Elizabeth Easter
Mr. Lee Eaton, II
Ms. Mary Eblen
Ms. Joan Eckmann
Ms. Cindy Edelen
Ms. Natalie Edwards
Mark Edwards
Ms. Peggy Ellis
Ms. Thirza Ellis
Mr. & Mrs. Richard G. Ellis
Mr. & Mrs. Joel Ellzey
Mr. & Mrs. Bryan D. Elser
Mr. & Mrs. Joseph Engelberg
Mr. & Mrs. William English
Mr. Richard Eskildsen
Ms. Janet S. Estes
Mr. & Mrs. Frank Ettensohn
Mr. & Mrs. David G. Evans
Mr. & Mrs. Henry S. Evans
Mr. & Mrs. Dickie Everman
Mr. Charles Fain
Ms. Hazel Farley
Mr. & Mrs. Kyle Farmer
Mr. Warren Featherston, Jr.
Ms. Catherine Feeney
Mr. & Mrs. Dale Fernandez
Mr. & Mrs. Don Field
Ms. Jean Filiatreau
Ms. Jean Finlay
Leigh Ann Finley
Mr. Ben Fister
Ms. Josephine C. Fitch
Ms. Andrea Fitzgerald
Mr. Craig B. Fitzpatrick
Mr. Richard Fitzpatrick
Mr. Richard Floyd, IV

Did you know... The Hope Center Day Labor Program placed clients in jobs 2,948 times last year.

With gratitude to our donors...

Gifts of \$1 to \$99

Mr. & Mrs. James Flueck
Mr. & Mrs. David Flynn
Mr. & Mrs. Michael Flynn
Ms. Mary K. Foley
Mr. & Mrs. Joseph K. Ford
Mr. & Mrs. Andrew Fore
Mrs. Lizbeth Fowler
Nancy L. Fraley
Caroline Francis
Mr. & Mrs. Robert Blair Franklin
Mr. & Mrs. Andrew Frascone
Mr. & Mrs. Paul Frederick
Mr. & Mrs. George Freeman
Sarah J. Fromm
Mr. Lawrence Frost
Mr. & Mrs. Daniel Fusting
Mr. & Mrs. William R. Gabbert
Mr. Edward E. Gage
Ms. Sara Gailey
Mrs. Elizabeth Galloway
Coralie C. Gallucci
Mr. & Mrs. Robert Gamble
Reverend & Mrs. Allen Garner
Mrs. Judy Kay Garrett
Gayle Gates
Mr. & Mrs. William Gee
Mr. & Mrs. August Geist, Jr.
Mrs. April Gibbons
Mr. James Gibson
Angela Gilbert
Ms. Mary Anne Gill
Mrs. Traci Gillespie
Mr. & Mrs. William Gilliland
Mr. & Mrs. Robert Glass
Mrs. Donna Goebeler
Mr. & Mrs. Paul Goldsberry
Mr. & Mrs. Thomas J. Goodenow
Ms. D. Elinor Goodnight
Mr. & Mrs. Curtis Green
Mr. John L. Greenway
Mr. Anthony Greer
Mr. & Mrs. Kevin Griese
Mr. & Mrs. Wallace Griffith
Mrs. Julie Grill
Mr. & Mrs. Peter Guy
Ms. Megan A. Hackett
Mr. Gilbert Haertel
Mr. & Mrs. Wallace Hagan
Hales Machinery & Supply
Mrs. Maribeth Hambrick
Ms. Sharon Hamilton
Mr. & Mrs. David Hamilton
Ms. Karen Hampton
Mrs. Margaret Hancock
Mr. W. James Hanna
Mrs. Lorene Hanshaw
Mr. & Mrs. Charles Harms
Mrs. Mary Wendell Harney
Harold Asher Insurance Agency

Dallam Harper
Mrs. Brooke N. Hart
Mr. A. James Harvener
Ms. Phyllis Hasbrouck
Mrs. Betty Hawkins
Ms. Elinor Hay
Mrs. Jerry Ann Hayes
Mr. Robert Haynes, Jr.
Mr. & Mrs. Paul Headley
Dr. & Mrs. Ira L. Hemmings
Mr. John Henderson
Ms. Ora Henry
Mr. & Mrs. Ronald Henry
Mr. & Mrs. Robert Herbst
Mrs. Donia Hermsillo
Mr. & Mrs. John Hicks
Mr. James H. Hicks
Mrs. Carey Highland



Ms. Deborah Hill
Ms. Deborah B. Hill
Mrs. Elizabeth Hobbs
Mrs. Marie Hochstrasser
Ms. Elizabeth Hocker
Howard Hodge
Amanda M. Hodges
Ms. Lorine Holderman
M.K. Holley
Mr. Brian Hon
Mr. & Mrs. Larry Hopkins
Mr. & Mrs. Frank Horlander
Mr. & Mrs. James Horn
Ms. Amy Hosier
Mr. Ken Howard
Ms. Susan Hubbard
Mr. & Mrs. Glenn Hudson
Ms. Mary Jean Hulse
Ms. Ruth K. Hutchins
Mr. & Mrs. Jimmy Hyatt
Mr. Clifford Hynniman
Ms. Dorothy Hytinen
IBM
Micah L. Ingram

Ms. Sheila R. Isaac
Ms. Heather Isaacs
Mr. & Mrs. Raymond Isenhour
Mr. & Mrs. Tim Ishmael
J. Hunt Perkins And Associates
Lewis C. Jackson
Janitech, Inc.
Ms. Ann Jenkins
Ms. Phyllis Jenness
Mr. & Mrs. David Jewell
Brad M. Jewell
John's Run Walk Shop
Ms. Ann Clift Johnson
Ms. Kim Johnson
Mrs. Mary Johnson
Mr. & Mrs. Donald Johnson
Mr. & Mrs. James Johnson
Mr. & Mrs. Stuart Johnson
Mr. & Mrs. Wilgard Johnson
Mr. Jerry D. Johnson
Frankie Johnson
Brooke R. Johnson
Johnson Energy Co.
Ms. Allison Johnston
Ms. Ruby Johnston
Ms. Lillian Jones
Ms. Tina L. Jones
Mr. Richard Jones
Ms. Kimberly Jordan
Mr. & Mrs. Bradford Jordan
Mr. Jack Kain
Mr. Donald Keith Kamer
Mrs. Meredith Karp
Mr. & Mrs. Louis Kawaja
Mr. & Mrs. Marshall Kearns
Jillian Kearns
Ms. Mary Kathryn Kelly
Mr. & Mrs. Lewis A. Kelly
Mr. Kevin Kelly
Mr. & Mrs. Paul Kemper
Kena Properties, Inc.
Ms. Frances Kendrick
Mrs. Marsha King
Mr. & Mrs. Jock Kinnett
Mr. Stephen Kinney
Kirby Nelson, Inc.
Ms. Norma Klinker
Mr. & Mrs. Philip Koerper
Mr. & Mrs. Vladimir Kostas
Ms. Laura Kovac
Mr. & Mrs. Kenneth Kubota
Mr. & Mrs. Keith Kuhn
Mr. & Mrs. F. Richard Kurzynske
Ms. Sandra Lafollette
Ms. Gretchen Lagodna
Mr. & Mrs. Patrick Lair
Mrs. Laura Lee Lakes
Willena R. Lane
Mr. & Mrs. James Lankster

Ms. Dorothy Large
Ms. Barbara J. Latham
Ms. Marcia Smith Lawrence
Mr. & Mrs. Lance J. Lawrence
Mrs. Mackenzie Riney
Leachman
Ms. Carol E. Leet
Mr. & Mrs. John Lemaster
Mr. Gilbert Lemay
Mr. & Mrs. A. Vincent Lemieux
Ms. Anne Lewis
Mrs. Janet Lewis
Mr. & Mrs. Dwight Lewis
Ms. Virginia Liddle
Mrs. Megan Lincavage
Mr. & Mrs. Gary Linkmeyer
Letha Linkmeyer
Mrs. Connie Linton
Fang-kum Loh
Mr. & Mrs. Ronald Loveless
Jean Price Lowe
Carol R. Lowery
Ms. Ann Lubbe
Mr. David Luckens
Mr. & Mrs. John J. Luddy
Col. Joe E. Lunceford
Mr. & Mrs. George W. Luxbacher
Mr. & Mrs. Michael Lynd
Mr. & Mrs. Barry MacDonald
Mr. Mark Maddox
Mr. Michael D. Madgett
Tyler Mainus
Mark E. Major
Ms. Joyce Malone
Roberta Mardis
Mr. & Mrs. Thomas Marshall
Ms. Anne Martin
Chris Martin
Mr. G. J. Mason
Mr. Michael Matherly
Mr. & Mrs. Doug Matthews
Mr. Henry C. Mayer
Mr. Lloyd Mayer
Ronald M. Mayer
Mr. David McCall
Elsie S. McCallum
Mrs. Sonya McCauley
Ms. Mary McConathy
Mr. & Mrs. James McCormack
Marletta McDermott
Mrs. Nicole McEntee
Mr. & Mrs. Daniel McFarland
James McKeighen, III
McNamara Search
Associates, Inc.
Ms. June McNeal
Mr. Bob McNulty
Mr. & Mrs. R. Jeffrey McQueary
Mr. Michael Meade

Did you know... The men's shelter provided 67,371 nights of lodging last year.

With gratitude to our donors...

Gifts of \$1 to \$99

Meadowthorpe Neighborhood Association
Mr. & Mrs. Ralph Meredith
Mr. & Mrs. Jeffery Merrill
Ms. Beth Messer
Mrs. Christina Meyers
Pamela R. Midboe-Penn, M.D.
Melynda Milburn
Mr. & Mrs. Green Miller
Mr. & Mrs. Gus Miller
Chris Miller
Mr. Freddie Mills
Mr. & Mrs. Greg B. Milward
Ms. Martha Mitchell
Ms. Lori Mobley
Mr. Jay Mok
Lynn Molloy
Mr. Irving Money
Mr. & Mrs. Christopher L. Montgomery
Mr. Richard G. Mook
Ms. Kathleen Campbell Moore
Ms. Kimberly Moore
Mr. & Mrs. Donald Moore
Mr. & Mrs. James Moore
Mr. & Mrs. Christopher Moorhead
Brenda K. Morgison
Ms. Marilyn Morris
Mrs. Libby Morris
Mr. Max Morris
Mrs. Jeanette Morrow
Ms. Elizabeth Mortara
Mr. & Mrs. Jeffrey Mudrak
Ms. Carol Mueller
Mr. James Mueller
Ms. Michelle Mullikin
Mrs. Bertilla Mullins
Mrs. Leslie Murphy
Mr. & Mrs. Richard V. Murphy
Ms. Robin Murray
Mr. & Mrs. James I. Murray
Mr. Dick Myers
Mr. Arthur Lee Myles
Mr. & Mrs. Allen Narwold
Ms. Michelle Nelson
Mr. & Mrs. Lawrence Neuman
Cathy Noel
Mr. Donald Norman
Margaret M. Norment
Mr. David Noyes
Ms. Anne O'Brien
Mr. & Mrs. David Olson
Ms. Karen O'Maley
Patricia Gilbert O'Neill
Ms. Marie C. O'Rourke
Ms. Jessica Oster
Mr. & Mrs. Timothy Overman
Mr. & Mrs. Ned Overton

Mr. & Mrs. E.W. Owens
Pairs and Spares
Ms. Patricia Parks
Ms. Valerie J. Parks
Mr. & Mrs. Mark S. Parks
Mr. & Mrs. Richard N. Parks
Ms. Diane Parrish
Mr. & Mrs. Thomas Parrott
Mr. & Mrs. Stoner K. Parsons
Mrs. Melissa Partin
Patsy Baker Living Trust
Mr. & Mrs. Mario Pavona
Mrs. Eleanor Grace Perreiah
Mr. Bruce Pieratt
Stacey Pishko
Ms. Margaret C. Pitt
Mr. Danny Place
Mr. & Mrs. John Plumlee
Mr. & Mrs. Kevin Plummer
Mr. & Mrs. Bill Polack
Mr. Paul T. Poletti
Mrs. Teresa Polites
Ms. Linda Porter
Cynthia P. Porter
Mr. & Mrs. Virgil Post
Post Time Inc
Mrs. Rebecca E. Powell
Ms. Mary Alice Pratt
Prevention Research Institute
Ms. Alice M. Proctor
Progressive Therapy, PSC
Mr. & Mrs. Gary Pruitt
Ms. Mary Puckett
Mr. Carl Pullen
Quantrell Auto Group
Mrs. Elaine Rabe
Mr. & Mrs. Robert Rabel
Mr. & Mrs. Francis Rafferty, Jr.
Ms. Kristin Rager
Mr. & Mrs. George M. Ragland, Jr.
Ms. Michelle Ralston
Ms. Noreen Ram
Mr. & Mrs. C. Randall Ramey
Ms. Molly J. Rannels
Mr. & Mrs. Jason Rapp
Mr. & Mrs. R.C. Redding
Ms. Brenda A. Reed
Mr. William Reed
Ms. Margaret Rees
Misty D. Reynolds
Ms. Garnetta Rhoads
Tonia Rice
Mr. & Mrs. Daniel Richardson
Stacey L. Richardson
N. T. Ricker
Mrs. Agnes Riley
Mr. & Mrs. Stan N. Riley
Ms. Krista Rinehart

Mr. & Mrs. John L. Rivel
Mr. & Mrs. Jerry Roahrig
Mrs. Margaret Roberts
Roberts & Kay, Inc.
Mr. & Mrs. Frank Robertson
Mr. & Mrs. William Robertson
Ms. Anne H. Robinson
Ms. Teresa L. Robinson
Ms. Lise Roemmele
Rose Manor Healthcare, LTD
Mr. & Mrs. Robert Ross
Ms. Melinda G. Rowe
Mr. & Mrs. Willard Rubarts



Mr. & Mrs. Joseph Ruckman
Ms. Catherine A. Rundell
Ms. Lee Ann Russell
Mrs. Christy Ryan
Mr. Miles Ryan
Mr. & Mrs. Bradley Saffell
Mrs. Lisa Salisbury
Mr. Arthur Salomon
Mr. & Mrs. Stirling Sampson
Dr. & Mrs. Nat Sandler
Dr. & Mrs. Stanley Saxe
Mrs. Jaime Sayre
Ms. Debra Gay Scandore
Amy D. Scarboro
Mr. & Mrs. John L. Schaefer
Mr. & Mrs. Kenneth Schlich
Ms. Thelma Schmucker
Mr. Schryer
Ms. Jenna Schultz
Ms. Mary-Jule Schurman
Ms. Elaine Schweitzer
Mrs. D. Schwoeppe
Mr. Eugene A. Schwoeppe
Ms. Elaine Scott
Mr. Gregory Scott
Mr. John Scott
Mr. Charles C. Seabrook
Mr. & Mrs. Andrew Seybert
SFG, Inc.

Mr. & Mrs. Louis Shain
Tena Shannon
Paula Sharp
Mr. & Mrs. David Sheeks
Ms. Marjorie Shipp
Ms. Jenny Lou Shirley
Ms. Doris Shouse-Nemore
Mr. & Mrs. William P. Shuman
Ms. Miriam Siegel
Mr. Mark A. Siegel
Mr. Robert Sigman
Mrs. Ruth Silberstein
Mrs. Diana Siler
Mr. & Mrs. Bruce Sillman
Mr. & Mrs. Charles Simms
Mrs. Tonya Singleton
Mary E. Skaggs
Mr. & Mrs. David Sledd
Ms. Kathy Sloan
Mrs. Carrie Slone
Ms. Barbara Smith
Ms. Hanna Smith
Ms. Missie Smith
Mrs. Ann Smith
Mrs. Deborah Smith
Mr. & Mrs. Samuel A. Smith
Angela R. Smith
Mr. & Mrs. Albert Smith, Jr.
Mr. Frederick Snodgrass
Mr. & Mrs. Danny Snyder
Mr. & Mrs. B. C. Southwood
Mr. & Mrs. Douglas Southworth
Ms. Christie Sparkman
Ms. Carol Spears
Ms. Rebecca Spencer
Ms. Sharon L. Spencer
Mr. Guy Stamper
Ms. Jane Stanger
Mr. & Mrs. Donald Stanko
Mr. & Mrs. William Starcher
Mr. & Mrs. William A. Starnes
Ms. Norma Jean Steele
Ms. Dana M. Stephens
Ms. Kimberly A. Stevens
Mr. & Mrs. Scott Stevens
Mr. & Mrs. Chester J. Stevenson
Ms. Karen D. Stewart
Ms. Kathryn Stewart
Mrs. Barbara Stidham
Christina L. Stigall
Mr. John M. Stoeckinger
Mrs. Deborah Strano
Mr. John Straus
Ms. Barbara Strippelhoff
Ms. Robin Strode
Mr. & Mrs. David A. Stromquist
Mr. & Mrs. Gary Stromquist
Jeanne Ontko Suchanek

Did you know... In the Hope Center Recovery Program for Women, 70% of the entering clients in 2005 had 12 years of education or less.

With gratitude to our donors...

Gifts of \$1 to \$99

Sullivan Insurance Agency	Mr. George W. Toma	David M. Ward	Mr. & Mrs. Bobby Willhoite
Ms. Barbara Summers	Mr. & Mrs. George Tomaich	Mrs. Nancy Warf	Ms. Leah Williams
Sunshine Organization with	Mr. & Mrs. Gary Toney	Ms. Mollie Watkins	Mr. & Mrs. Michael Williams
Immanuel Baptist Church	Mr. David Toomey	Mr. & Mrs. Larry Watson	Dr. Barbara Williams
W. G. Suthon	Mr. Theodore G. Toponak	Ms. Linda Webb	Laura J. Williams
Mr. & Mrs. Sidney Sutphin	Lesa L. Towe	Ms. Patricia Webb	Mr. & Mrs. Mark Willis
Ms. Esther Sutton	United Way Of The Bluegrass	Brian Webb	Sara M. Willison
Ms. Kandy Sutton	Mr. & Mrs. Woodford Van Meter	Mr. & Mrs. Christian Weigel	Mrs. Connie Willoughby
Mr. & Mrs. Ben F. Swanner, III	Mr. & Mrs. Charles Varnell	Ms. Cathy Weil	Mr. & Mrs. William Wilson
Mrs. Marilyn Szczygielski	Ms. Mary Vaughan	Mrs. Sally Weisenberger	Kevin G. Wilson
Ms. Maureen Tarpey	Mr. & Mrs. John Veith, III	Mr. & Mrs. Samuel Welch	Mr. Paul Winchester
Mr. & Mrs. Charles Taylor	Ms. Ann Vise	Ms. Bethany W. Wells	Windjammers
Mr. & Mrs. William Taylor	Lisa Voils	Mrs. Carolyn Sue Wells	Ms. Latrice R. Winn
Ginny Taylor	Voltaic Commerce, Inc.	Sharron Wesley	Jocelyn A. Wojciehowski
Mrs. Laura Wireman Thomas	Mr. & Mrs. William W. Wachs	Mr. Carleton L. West	Mr. & Mrs. Robert Wolf
Mr. & Mrs. Mitchell Thomas	Mr. & Mrs. Wayne Waddell	Mrs. Karman Wheeler	Mr. & Mrs. Arden J. Wolterman
Mr. & Mrs. Billy Thompson	Mr. Raymond F. Wade	Dana Whitaker	Ms. Pamla Wood
Mr. & Mrs. James Thompson	Ms. Elizabeth M. Wagner	Amy White	Mr. & Mrs. Thomas Worland
Mr. & Mrs. W. C. Thompson	Mr. William F. Wagner	Mr. & Mrs. Paul Wierzbinski	Mr. & Mrs. Joshua Wren
Ashley R. Tingle	Dr. & Mrs. Gary R. Wallace	Ms. Amanda Wilhoite	Ms. Natalie Young
Mrs. Laurel Tinker	Ms. Rena A. Wallen	Dr. Raymond Wilkie	
Dr. & Mrs. Lee Todd	Mr. & Mrs. Damon Ward	Mr. & Mrs. Norman Willard, Jr.	

In-kind Sustaining Partners



Quantrell Auto Group donated a new Cadillac for the Hope Center to raffle off in the 2005-2006 fiscal year. Bonnie Quantrell Jones has long been a board member and generous supporter of the Hope Center's mission. By making the donation of the new automobile, she and Bill Bridges helped the Hope Center leverage their support into more than \$100,000 in raffle ticket sales.

ACS	Connie Baker	Kentucky Homes and Gardens	Russell Cave Church of Christ
AdColor	Cumulus Broadcasting	Magazine	Ruth Hunt Candies
Ann Colyer	Dave Norat	Lexmark	Sarah Williams
Applebee's	Daybreak Community Church	Lextran	Sarita Goins
Applebee's Park	Diane Dean	Linda Williams	Second Presbyterian Church
Ashland	Dudley's Restaurant	Lisa Gilliam	Shiloh Baptist Church
Atlanta Bread Company	Employees of Ashland, Inc.	Little Zion Baptist Church	Sid Sutphin
B. Nicol Development	Employees of Toyota	LM Communications	South Sider
Baker Chiropractic, P.S.C.	Manufacturing	Louis' Flower Power Shops	Southern Hills United Methodist Church
Ball Homes	Fidelis Sunday School Class	Lundy's Catering	Southland Christian Church
Billie Mallory	First Presbyterian Church	Main Street Baptist Church	Space Center Storage
Black Women Education Institute	Fritzie Terwilliger	Malone's of Lexington	Starbucks (Main St)
Bluegrass Credit Union	George Foley	Mary Ellen Klatte	Subway on Palumbo Drive
Bluegrass Parrot Heads Club	Glynes Jones	Mary Williams	Tempurpedic
Boyd County High School	Good Food Coop	Montessori Middle School	The BlueGrass Credit Union Chapter
Broadway Baptist Church	Goodrich Ice Cream on Palumbo Drive	Mr. & Mrs. Charles Williams	The Kentucky Horse Park
Cash Express	Grace Baptist Church	Mrs. Jo Robertson	The New Balance Store
Cathedral of Christ the King	Grace Perreiah	Newman Center	The UPS Store
Centenary United Methodist Church	Hamburg Journal	Nona Buettner	Thomas & King
Central Bank & Trust Company	Hammond Design	Old Kentucky Chocolates	Tubby and Donna Smith
Chevy Chaser	Hill-n-Dale Christian Church	Orlando's Party Pantry	UPS Stores
Chris Derleth from Charlie Brown's Restaurant	Homewood Suites	Patrick Brewer Family	UK Food Service
Christ the King	Hope Springs Community Church	Pepsi Co.	Victory Baptist Church
Clear Channel Broadcasting	Immanuel Baptist Church	Pleasant Green Baptist	Whitaker Bank
Coca-Cola	Insight Communications	Porter Memorial Baptist Church	Wild Oats Natural Marketplace
Comedy Off Broadway	Jim & Evelyn Bennett	Quantrell Auto Group	Willing Hands Quilters
Commonwealth Travel	John's Run Walk Shop	Rainmaker Advertising, Don	WKYT
	Joseph Mondelli's Bakery	Oschwald President	
		Reba Johnson, Imani Church	

Did you know... Among the clients who entered the Hope Center Recovery Program for Women in 2005, 64% reported being a victim of domestic violence.

*Seeds
of
Hope*

Remember
the Hope Center
in your will or
estate planning.



Mailing Address
P.O. Box 6
Lexington, Kentucky 40588

Street Address
360 West Loudon Avenue

Telephone
859 252-7881



**Recovery Program
for Women**

1524 Versailles Road
Lexington, Kentucky 40504

Telephone
859 252-2002



**Hill Rise Place
Apartments**

709 North Hill Rise Court
Lexington, Kentucky 40504

Telephone
859 255-8077



**United Way
of the Bluegrass**

Mailing Address:
P.O. Box 6
Lexington, Ky. 40588

NonProfit Org.
U.S. Postage
PAID
Lexington KY
Permit No. 998